



GOBIERNO DE
SAN JUAN

MINISTERIO DE
MINERÍA

SAN JUAN

EXPLORING

OPPORTUNITIES



GOBIERNO DE
SAN JUAN

MINISTERIO DE
MINERÍA

SCENARIO FOR NATIONAL MINING DEVELOPMENT

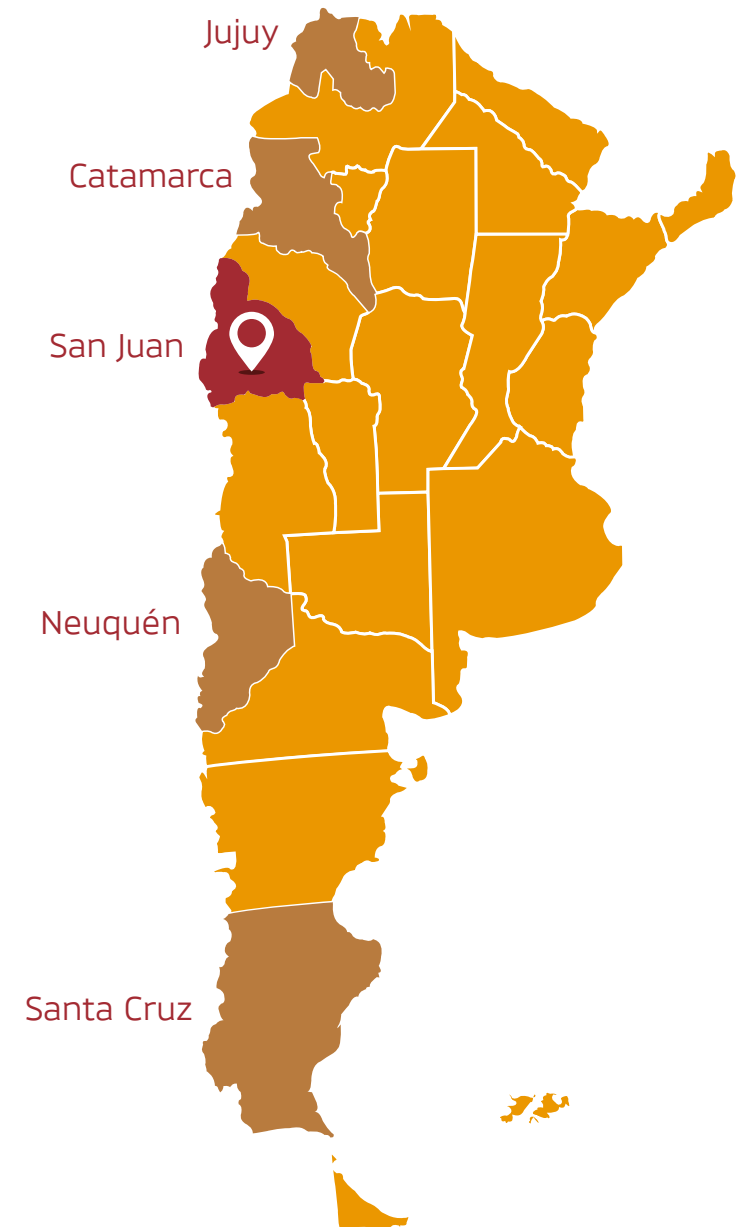
The policy discussion from a federal perspective with provincial participation and consensus transformed the Federal Mining Council into the natural environment for all decisions related to mining development in Argentina.

Their actions resulted in Law no. 24,192 of Mining Investment Promotion, 24.224 of Mining Reorganization, 24.228 corresponding to the ratification of the Federal Mining Agreement, and in the reform of the Mining Code through Laws no. 24,498 of Mining Actualization and 24,585 of Mineral Environmental Protection which added a new section to the Code of Mining establishing all standards to be met by mining activity in regards to environmental protection.



SCENARIO FOR NATIONAL MINING DEVELOPMENT

These measures promoted by the provincial consensus had significant results. Through low levels of investment up until 2014, we reached over 3.7 billion dollars in exploration and more than 19 billion dollars in construction of facilities that put into production twelve new mining establishments, located in the Provinces of Jujuy, Catamarca, San Juan, Neuquén and Santa Cruz. Mining production started to exceed 7.500 billion dollars and exports reached a record high of 5.4 billion dollars in 2012.



SAN JUAN

IN THE WORLD

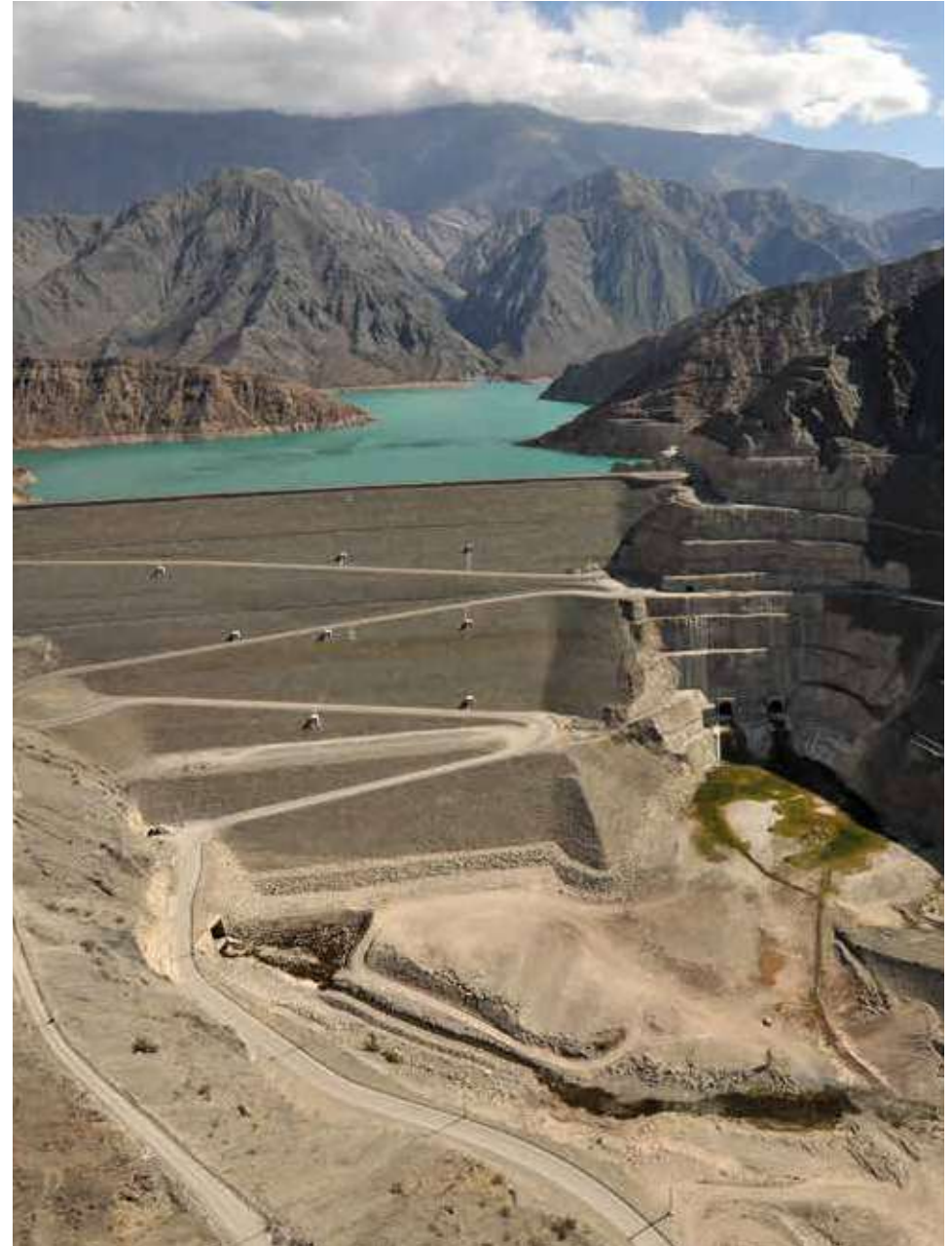
- › The province of San Juan is located located at the foothills of the Andes Mountain Range to the west of Argentina.
- › It occupies a total surface area of 92,789 km². Almost 80% of the territory is covered by hills and mountains and the rest is comprised of intermountain valleys.
- › It is populated by 681,055 inhabitants, with a density of 8 inhabitants per km².
- › In the last 12 years, the growth rate of economic activity reached an annual average of 13% (+ 150% cumulative GDP).



SAN JUAN

IN THE WORLD

- This growth was achieved through an economic policy that prioritizes mining as the factor for development.
- The first gold casting in 2006 was a milestone in the changing of our local production structure.
- Agriculture with high levels of specialization and diversification constitutes an agricultural complex which includes subproducts from grapevines, olives, vegetables and fruit.
- Industrial activity is all related to the mining industry (metallurgy, non-metalliferous minerals, textiles and agroindustry).



SAN JUAN IN THE WORLD

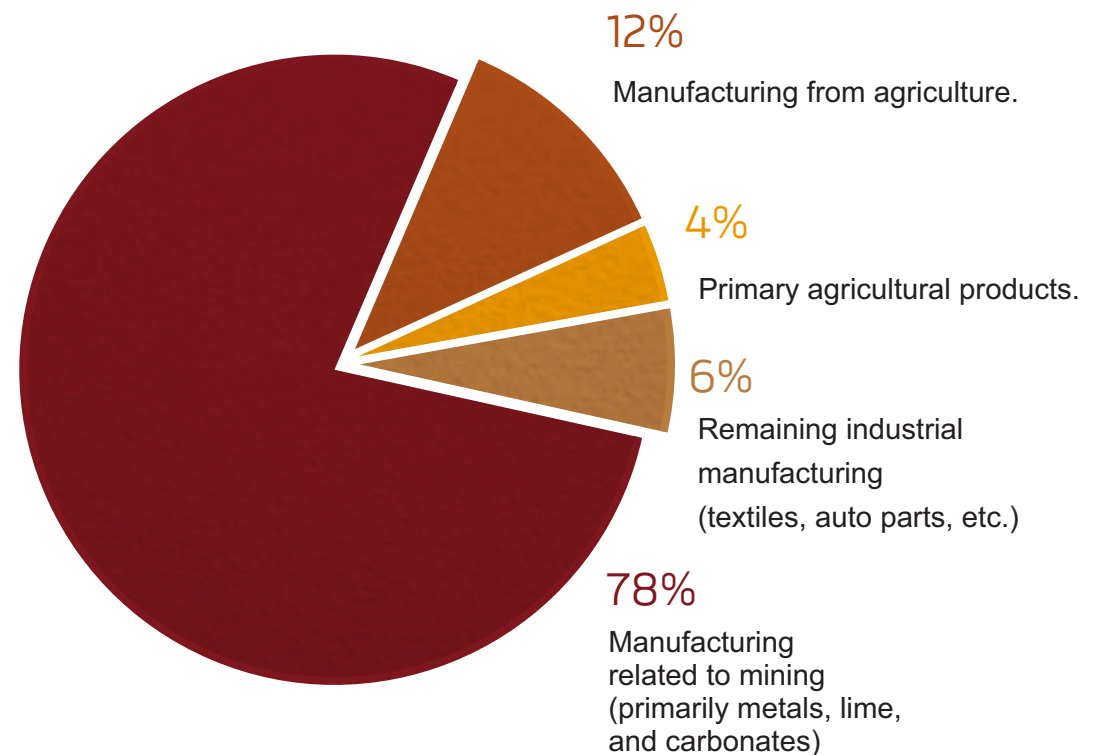


EXTERIOR COMMERCE

Foreign trade has a **fundamental role** in economic provincial growth. The majority of exports are related to mining and agroindustry.

Foreign exchange generated annually by exports is 1.7 billion dollars FOB, supported by 78% in manufacturing from mining.

➤ TOTAL EXPORT VALUE OF SAN JUAN BY PRODUCT TYPE (Total %)



Fuente: IIEE Gobierno de San Juan. Año 2015

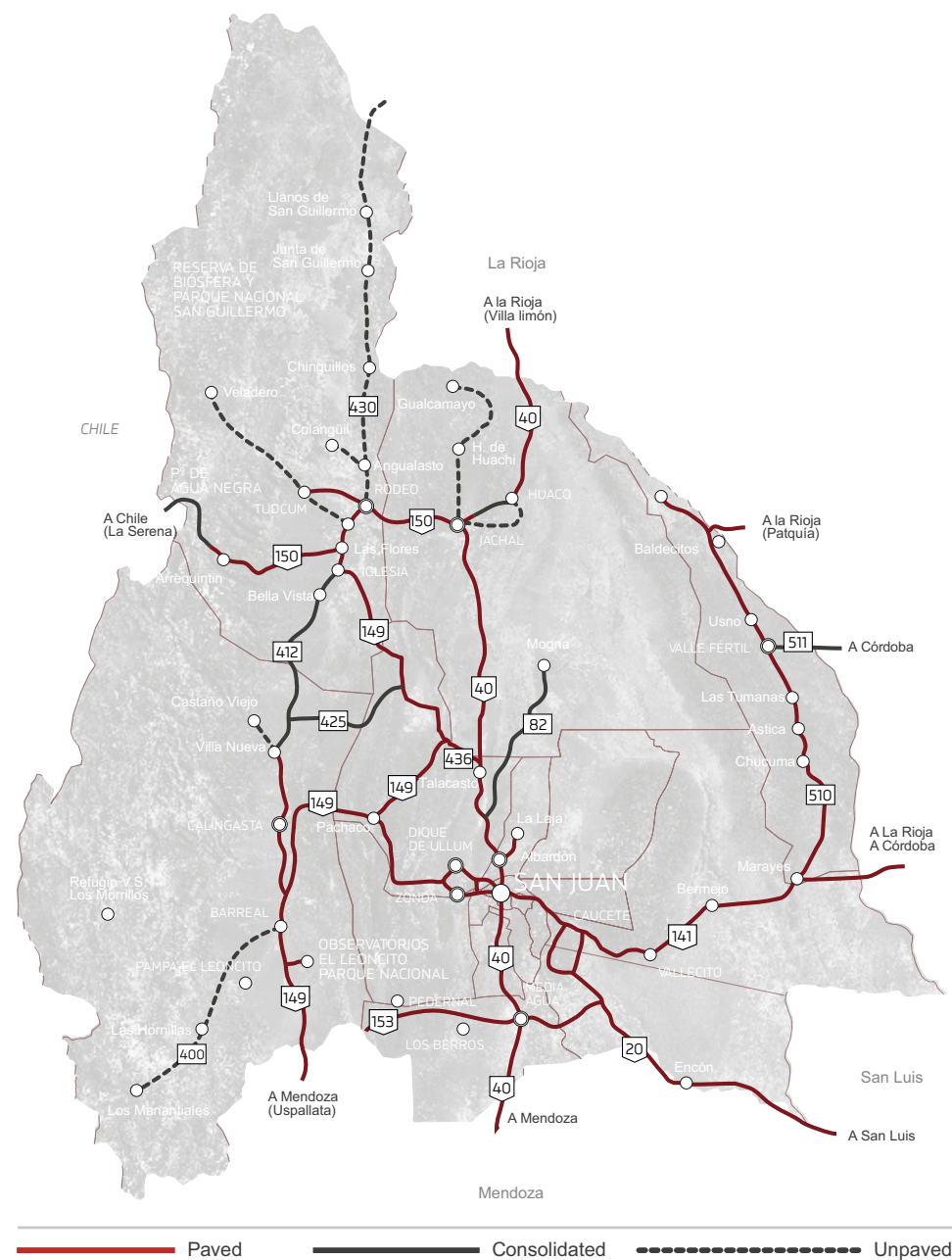
DEVELOPMENT INFRASTRUCTURE

Public investment concentrated in last 12 years in basic infrastructure for development, providing solid support for plans, programs and productive projects, both social and cultural and in the private and public sectors.



DEVELOPMENT INFRASTRUCTURE

- Provincial Road N°430 – Iglesia Department
- Nacional Road N°150 - Section: "Rotonda San Roque: Intersection of National Roads N° 40 y 150 (Jáchal) Intersection of National Roads N°149 y 150 (Las Flores, Iglesia)" (in progress).
- Road N°149
- Provincial Road N°412 – Section II: Access to Villa Nueva Km. 39 (Urban Crossing) Calingasta Department (under construction)
- Colangüil Rural Electrification – Buena Esperanza, Achango, Malimán and Maipiriqui.
- 133 Kv line funded by mining contributions (Jáchal, connection to the Gualcamayo mine).
- 500 kV line funded by mining contributions (Iglesia, Calingasta and connection to the National Interconnected System through Mendoza. No Longer terminal Province).





CENTRAL BIOCEANIC CORRIDOR

COQUIMBO – PORTO ALEGRE

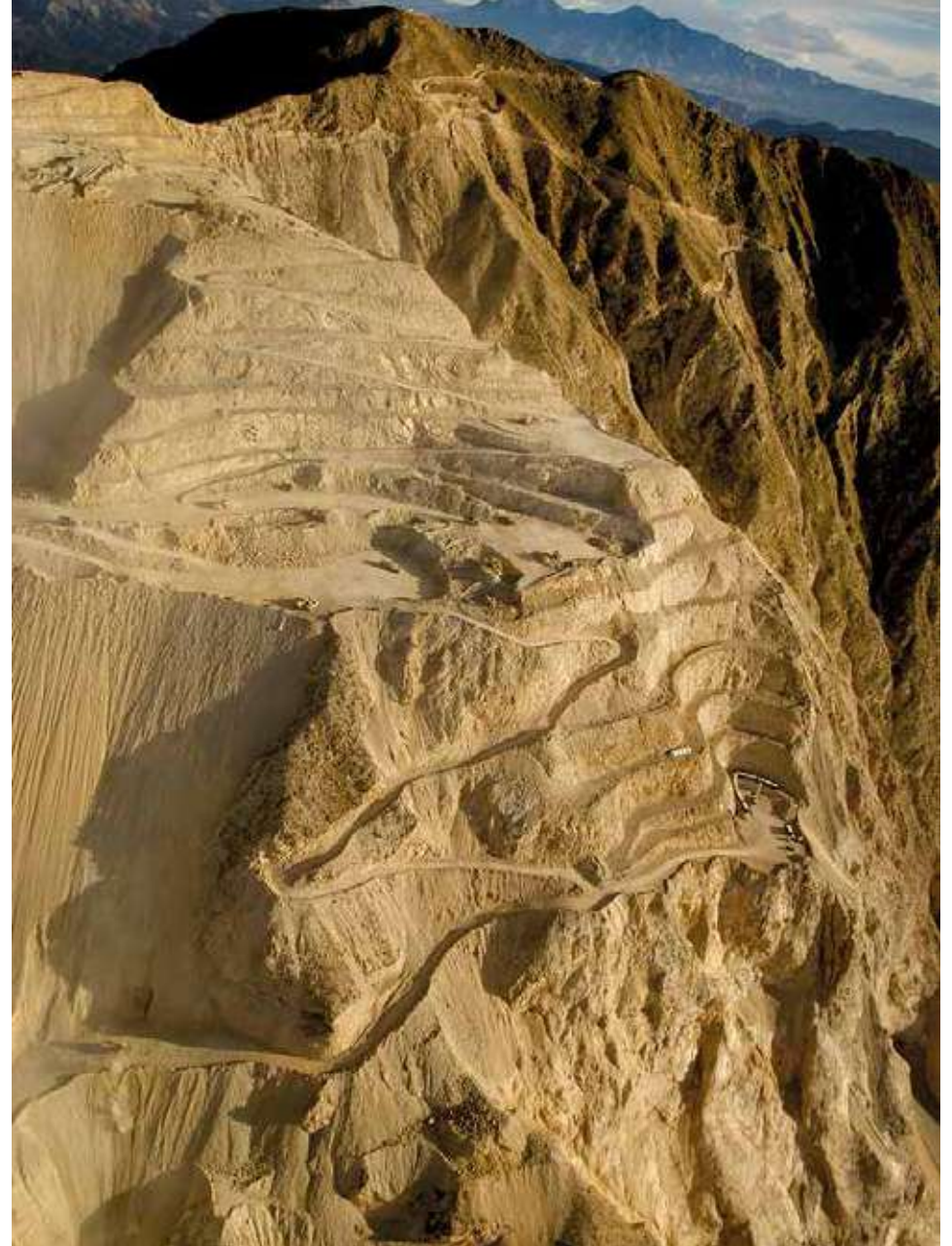
SAN JUAN'S STRATEGIC PROJECT: TÚNEL DE AGUA NEGRA and ROAD N°150





SAN JUAN – DESTINATION FOR MINING INVESTMENTS

The province of San Juan has a geological mining potential that includes metalliferous and non-metalliferous metals as well as application rock. Large scale metalliferous mining has been present for over 15 years. More than 100 years of work consolidate our lime industry. Currently, more than a thousand local companies provide goods and services to the mining value chain.



GEOLOGICAL MINING POTENTIAL

* Application rock

Consisting of high quality and quantity marble.

*** Industrial products of mining origin**

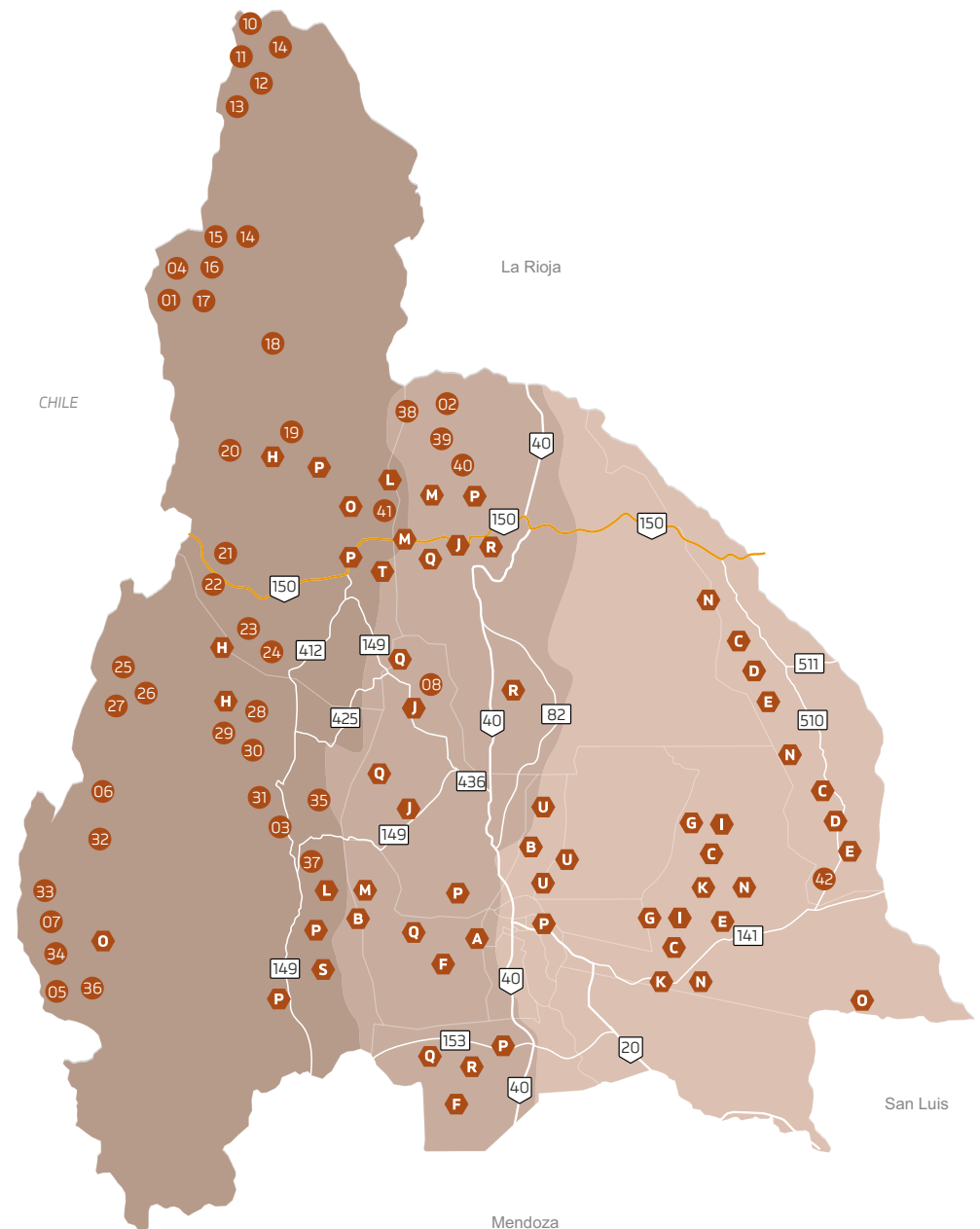
Leading nationwide lime exporter,
totaling 600,000 tons / year.

* Minerales no metalíferos

Bentonite, quartz, feldspar, mica, talc, among others. Quartz will transform San Juan province in the number one producer of solar panels for renewable energy generation.

* Metalliferous Minerals

Large reserves of gold, silver and copper.



MAIN PROSPECTS AND METALLIFEROUS MINING PROJECTS

MINES IN PRODUCTION

- 1 Veladero
- 2 Gualcamayo
- 3 Casposo

MINES UNDER CONSTRUCTION

- 4 Pascua-Lama (stand-by)

FEASIBLE PROJECTS

- 5 El Pachón

PROJECTS IN ADVANCED EXPLORATION STAGE

- 6 Los Azules
- 7 Altar
- 8 Hualilán

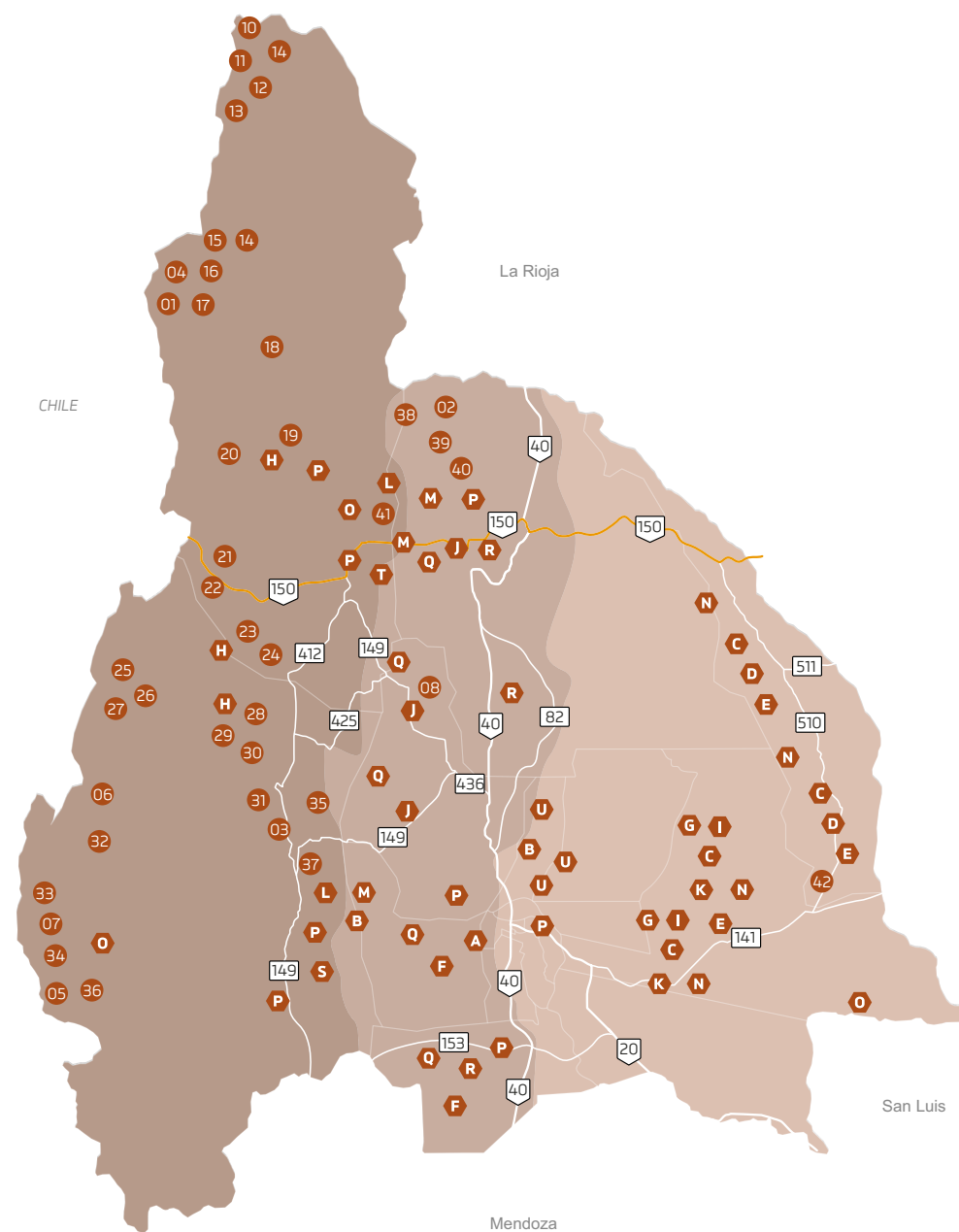
PROYECTO EN PROSPECCIÓN/EXPLORACIÓN

- 9 Batidero
- 10 Vicuña
- 11 José María - Filo del Sol
- 12 Mogotes
- 13 Las Flechas
- 14 Arroyo Los Amarillos
- 15 Tagûas
- 16 La Ortiga
- 17 Despoblados
- 18 Jagüelito
- 19 Poncha
- 20 Del Carmen
- 21 Amiches
- 22 Yunque
- 23 Brecha Vacas
- 24 Chita
- 25 Patos Norte
- 26 Potrerillos
- 27 Valle Hermoso
- 28 San Francisco

- 29 Tres Amigos
- 30 Castaño Nuevo
- 31 Manantiales
- 32 Rincones de Araya
- 33 Calderón Calderoncito
- 34 Río Cenicero
- 35 El Tapau
- 36 Vanesa I and II
- 37 El Salto
- 38 Guachi
- 39 Las Marías
- 40 El Pescado
- 41 Carrizal
- 41 Santo Domingo

INDUSTRIAL MATERIALS AND APPLICATION ROCK OCCURRENCE AND LOCATION

- A Clays
- B Bentonite
- C Quartz
- D Feldespar
- E Dolomite
- F Schists
- G Granite
- H Graphite
- I Grafito
- J Na Sulphate
- K Mg Sulfate
- L Al Sulphate
- M Mg Sulphate
- N Talc
- O Gypsum
- P Aggregates
- Q Limestone
- R Calcite
- S Kaolín
- T Diatoms
- U Travertine

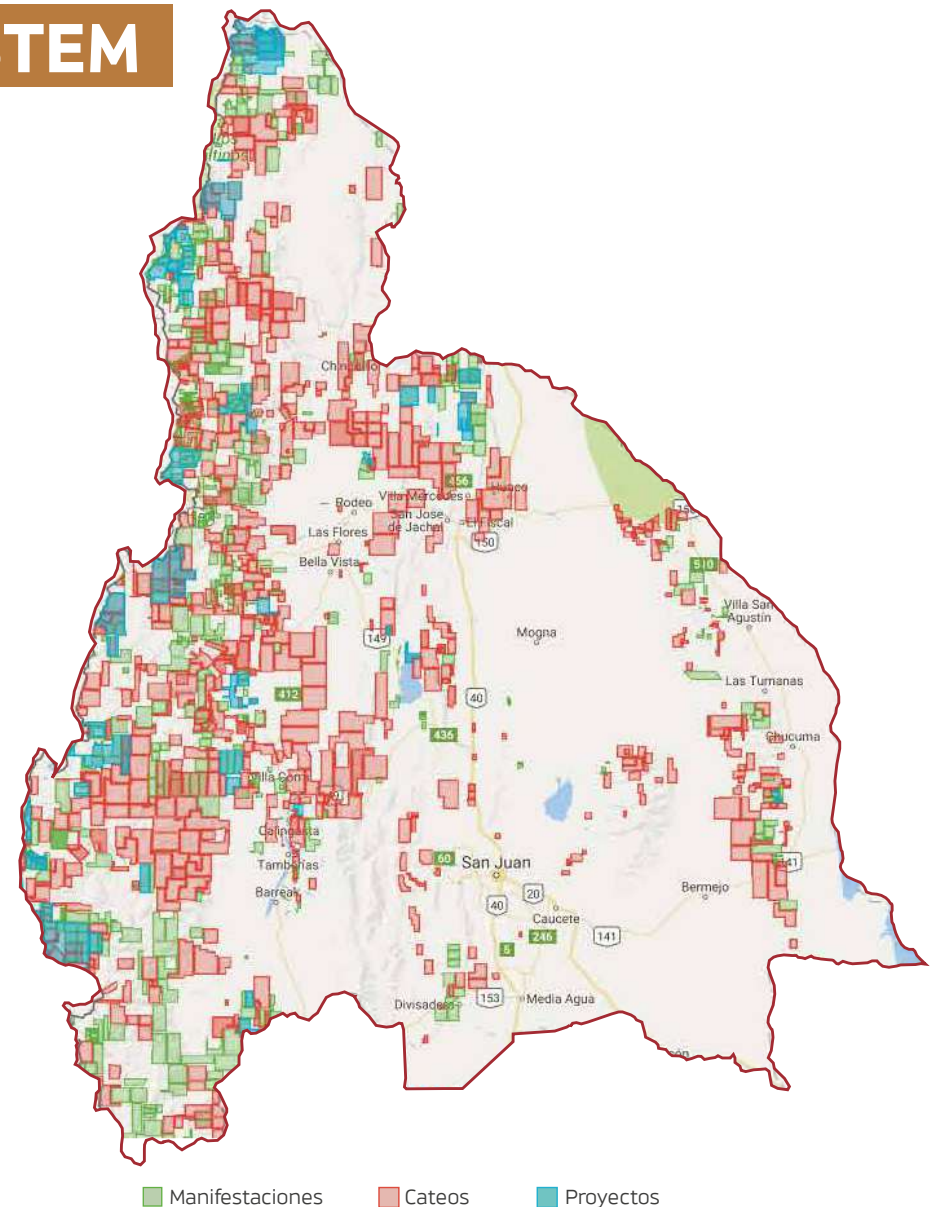


GEOLOGICAL MINING POTENTIAL



S.I.G .: PROVINCIAL MINING GEOGRAPHIC INFORMATION SYSTEM

The Ministry of Mining of San Juan pioneered the creation of the Provincial Mining Geographic Information System which shows data on manifestations, explorations and projects in real time through the website <http://gis.sanjuan.gov.ar/>. This is our primary resource for international investors.



ACTIVE METALLIFEROUS MINES



VELADERO MINE



CASPOSO MINE



GUALCAMAYO MINE



VELADERO MINE

Barrick

Gold Reserves: 16.400.000 oz
Barrick Annual Report 2015



CASPOSO MINE

Troy Resources

Gold Reserves: 500.000 oz

Silver Reserves: 6.618.400 oz

Troy Resources Annual Report 2015



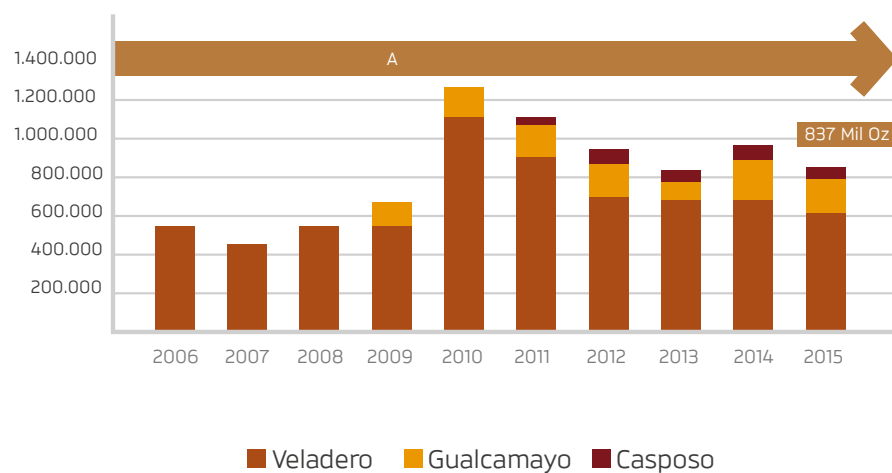
GUALCAMAYO MINES

Yamana Gold Inc.

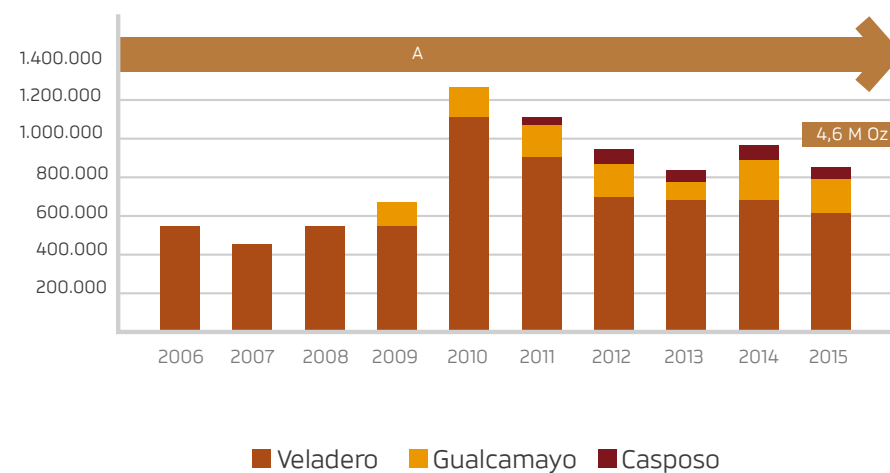
Gold Reserves: 1,700,000 oz
Annual Information Form for the
Fiscal Year ended dec. 31, 2015

MARKETED MINERAL

MARKETED PRODUCT X MINE (GOLD OZ)
ACCUMULATED: 16 MILLION OZ

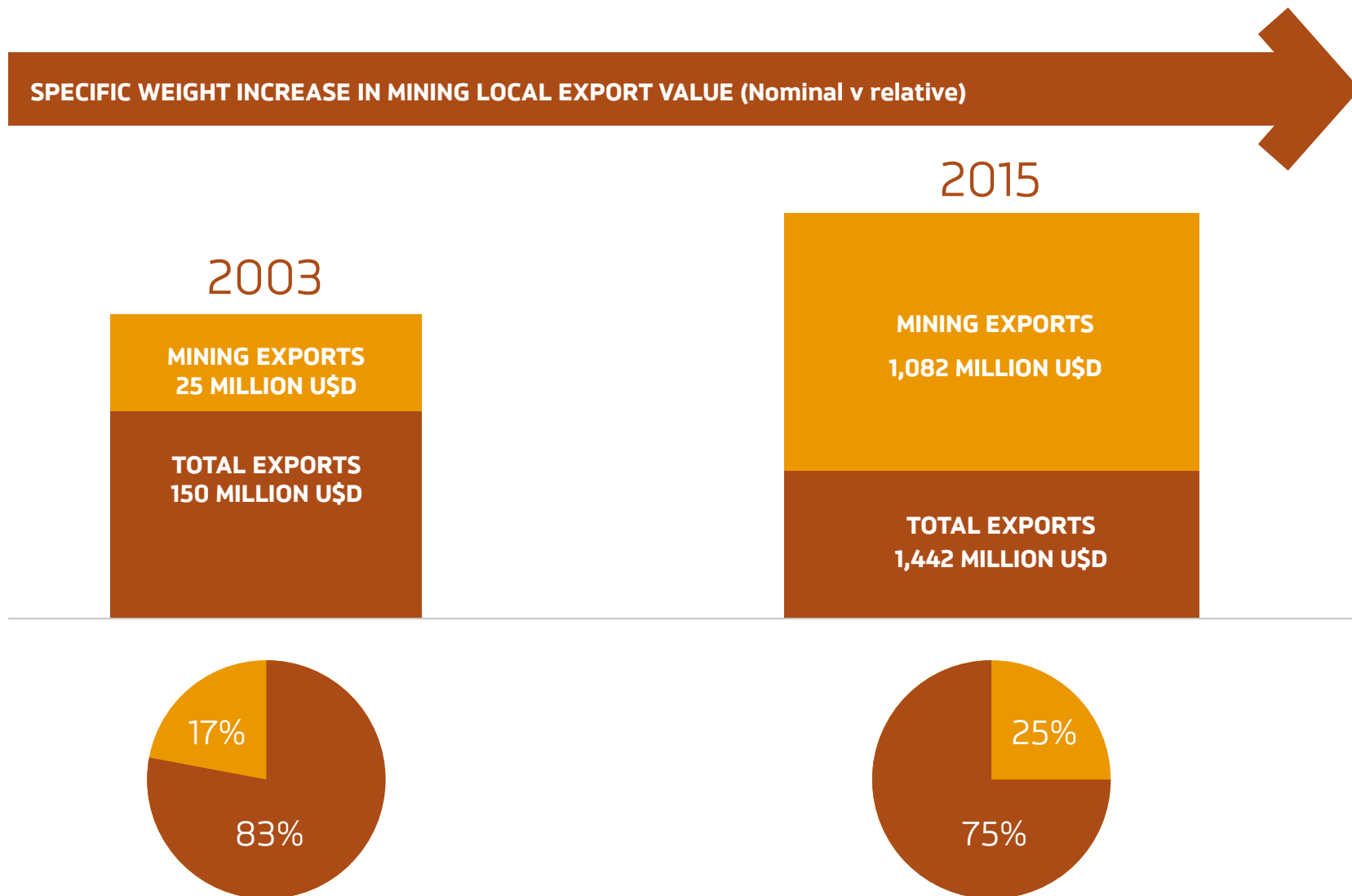


MARKETED PRODUCT X MINE (SILVER OZ)
ACCUMULATED: 46 MILLION OZ



STATE MINING POLICY

SPECIFIC WEIGHT INCREASE IN MINING LOCAL EXPORT VALUE (Nominal v relative)



MINING RESOURCES IN SAN JUAN

Mining resources in the province of San Juan are located and characterized in two ways:

:

➤ Provincial Reserve Areas

Associated with metalliferous minerals whose membership and ownership correspond to the Provincial Institute of Mining Exploration and Exploitation (IPEEM). IPEEM is aimed at acquisition of mining rights for provincial reserves and facilitation of exploration and exploitation through contracts with third parties.

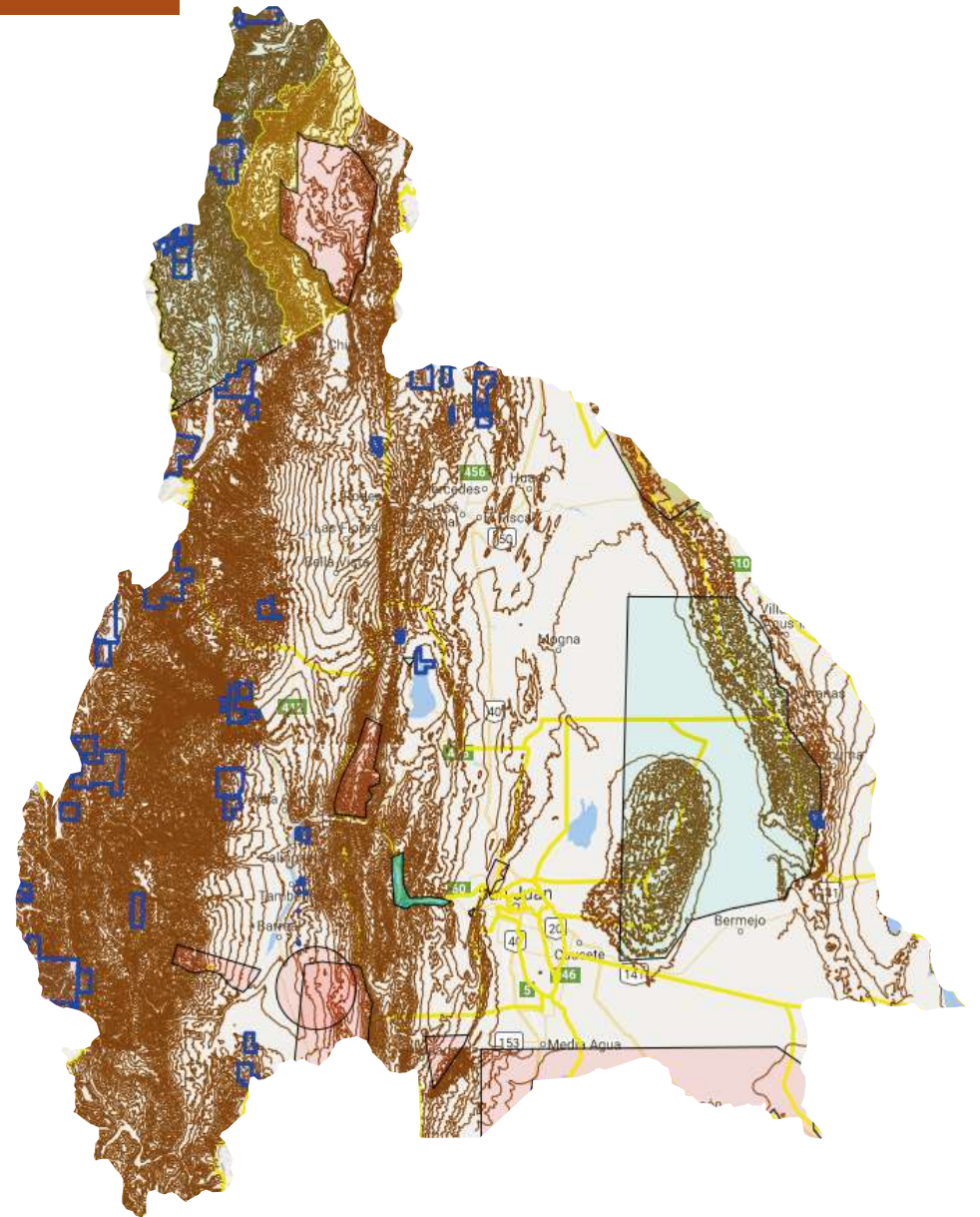
IPEEM has called for the licitation of six areas of gold, copper and silver for the month of November 2016:



MINING RESOURCES IN SAN JUAN

➤ Freely availability resources

All mineral resources that may be requested to the provincial mining authority by anyone physical or legal, national or foreign.



MINING RESOURCES IN SAN JUAN

PROJECT	COMPANY	STAGE	MINERALIZATION	DEPARTMENT
ALTAR	STILLWATER MINNIG COMPANY	ADVANCED EXPLORATION	COPPER	CALINGASTA
ARROYO LOS AMARILLOS	ARGENTINA MINING LIMITED/ ENTOPY RESOURCE	PROSPECTION	GOLD, SILVER, COPPER	IGLESIA
BATIDERO	DEPROMIN SA	EXPLORATION	GOLD	IGLESIA
CASPOSO	TROY RESOURCES ARGENTINA LTD.	PRODUCTION	GOLD, SILVER	CALINGASTA
CALDERONCALDERONCITO	AMINSA	EXPLORATION	GOLD, COPPER, MOLYBDENUM	CALINGASTA
CHITA	MINERA SUDAMERICA	EXPLORATION	GOLD, SILVER	IGLESIA
DEL CARMEN	CIA. MINERA DEL CARMEN	EXPLORATION	GOLD	IGLESIA
DESPOBLADOS	IPEEM	EXPLORATION	GOLD	IGLESIA
EVELINA	MINAS ARGENTINAS	EXPLORATION	GOLD	IGLESIA
FILO DEL SOL	DEPROMIN SA	PROSPECTION EXPLORATION	GOLD, COPPER	IGLESIA
GUALCAMAYO	YAMANA GOLD	PRODUCTION	GOLD, SILVER	JACHAL
HUALILAN	GPL	EXPLORATION	GOLD	ULLUM
JAGUELITO	IPEEM	EXPLORATION	GOLD	IGLESIA
JOSE MARIA	DEPROMIN	EXPLORATION	GOLD	IGLESIA
LAMA	BEASA BARRICK EXPLORACIONES ARGENTINAS	CONSTRUCCIÓN	GOLD, SILVER, COPPER	IGLESIA
LA ORTIGA	IPEEM	EXPLORATION	GOLD	IGLESIA
LAS MARIAS	JACKSON GLOBAL	PROSPECTION EXPLORATION	URANIUM	JACHAL
LOS AZULES	MINERA ANDES	ADVANCED EXPLORATION	GOLD, COPPER	CALINGASTA
MOGOTES	INVERSORES MINERAS AUSTRALES	EXPLORACIÓN	GOLD, COPPER	IGLESIA
PACHON	GLENCORE	EXPLORACIÓN	COPPER, SILVER, MOLYBDENUM	CALINGASTA
POTRERILLOS	GOLDEN ARROW RESOURCES CORP.	EXPLORACIÓN	GOLD, COPPER	IGLESIA
RINCONES DE ARAYA	AMINSA	EXPLORACIÓN	GOLD, COPPER, MOLYBDENUM	CALINGASTA
RIO CENICERO	STILLWATER MINNIG COMPANY	EXPLORACIÓN	GOLD, COPPER, MOLYBDENUM	CALINGASTA
RIO LA SAL	DEPROMINSA	PROSPECCIÓN	COPPER, GOLD, SILVER	IGLESIA
TAGUAS	COMPANIA MINERA PIUQUENES	EXPLORACIÓN	GOLD, SILVER, COPPER	IGLESIA
VANESA I	IPEEM	PROSPECCIÓN	GOLD, SILVER, COPPER	CALINGASTA
VANESA II	IPEEM	PROSPECCIÓN	GOLD, SILVER, COPPER	CALINGASTA
VELADERO	MAGSA	PRODUCCIÓN	GOLD, SILVER	IGLESIA
VICUÑA	DEPROMIN S.A.	EXPLORACIÓN	GOLD, COPPER	IGLESIA
YUNQUE	COMPANIA MINERA PIUQUENES	EXPLORACIÓN	GOLD, COPPER	CALINGASTA



**LET'S EXPLORE
NEW OPPORTUNITIES**



GOBIERNO DE
SAN JUAN

MINISTERIO DE
MINERÍA

**THANK YOU
FOR YOUR INTEREST**